

Specs:

Bedrooms:	4
Bathrooms:	3.5
Square Footage:	2,695 Sq.Ft.
First Level:	1,580 Sq. Ft.
Second Level:	1,115 Sq. Ft.
Width:	40' - 10"
Depth:	56' - 0"

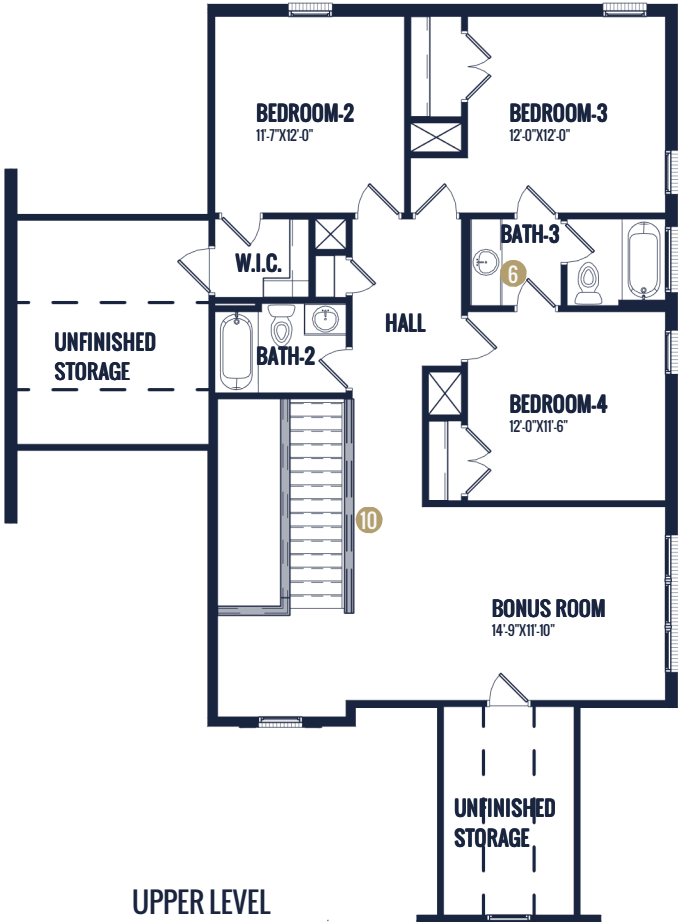
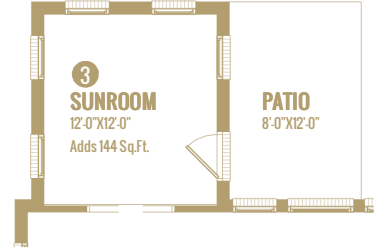
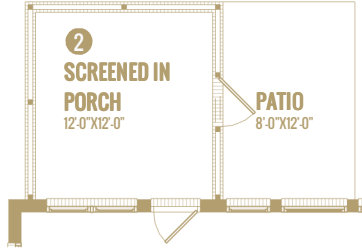
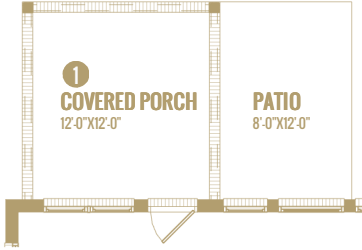
Options Shown:

- | | |
|-----------------------------------|--------------------------------------|
| 1 Covered Porch | 9 French Doors at Flex space |
| 2 Screened in Porch | 10 Open Rails at Stairs |
| 3 Sunroom (Adds 144 Sq.Ft.) | 11 Additional Cabinets at Island |
| 4 3'-0" Wider Garage w/ Two Doors | 12 Enlarged Corner Kitchen Pantry |
| 5 2'-0" Garage Extension | 13 Enlarged Curved Patio w/ Fire Pit |
| 6 Double Sink Bath-3 | 14 Twin Window at Breakfast |
| 7 Built-ins | 15 Pet Room |
| 8 Drop Zone | |

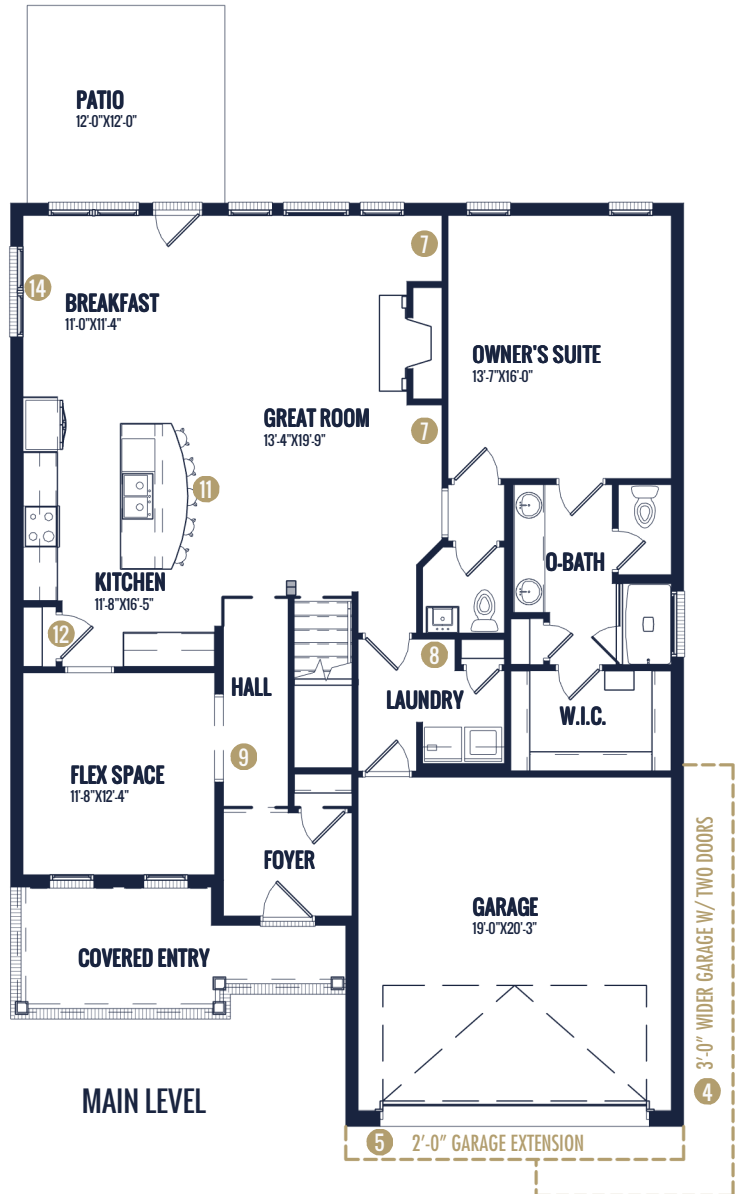
Watercolors, illustrations, and floor plans are for marketing purposes only and are subject to change at builder's discretion. Square footage is outside veneer and should be independently verified. This is not a legal document.
10/3/2022 5:10:08 PM



FLOOR PLAN: PRESTON TRANSITIONAL



UPPER LEVEL



MAIN LEVEL

Watercolors, illustrations, and floor plans are for marketing purposes only and are subject to change at builder's discretion. Square footage is outside veneer and should be independently verified. This is not a legal document. 10/3/2022 5:10:10 PM



FLOOR PLAN: PRESTON TRANSITIONAL



DOUBLE SINK



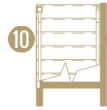
BUILT-INS



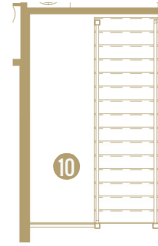
DROP ZONE



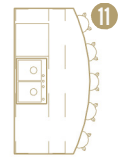
FRENCH DOORS



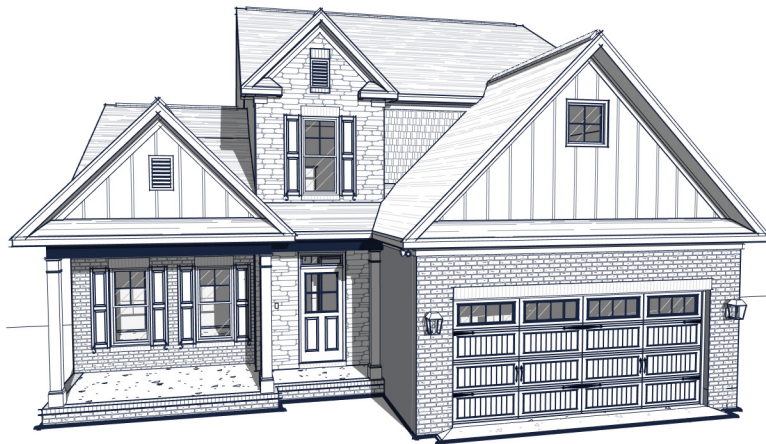
OPEN-RAILS



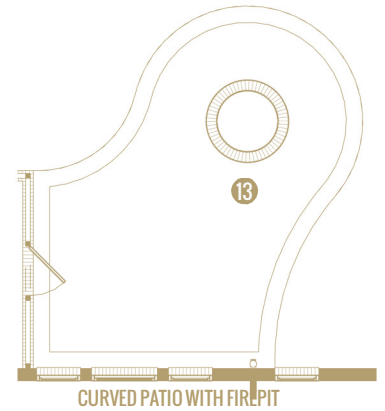
OPEN-RAILS



CABINETS AT ISLAND



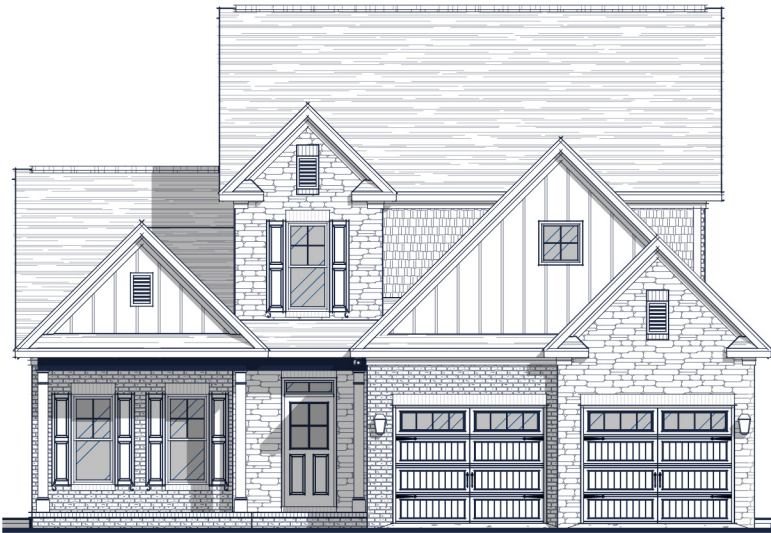
CORNER PANTRY



CURVED PATIO WITH FIRE PIT



PET ROOM



4 3'-0" WIDER GARAGE W/ TWO DOORS

Watercolors, illustrations, and floor plans are for marketing purposes only and are subject to change at builder's discretion. Square footage is outside veneer and should be independently verified. This is not a legal document.
10/3/2022 5:10:16 PM